

KEITH

301 East Atlantic Blvd.
Pompano Beach, FL 33060
PH: (954) 788-3400

Florida Engineering Business License: CA7928
Florida Surveyor and Mapper Business License: LB6860
Florida Landscape Architecture Business License: LC26000457

REVISIONS

| NO. | DESCRIPTION | DATE |
|-----|-------------|------|
| | | |
| | | |
| | | |
| | | |
| | | |
| | | |
| | | |
| | | |
| | | |
| | | |
| | | |

PRELIMINARY PLAN
NOT FOR CONSTRUCTION
THESE PLANS ARE NOT FULLY PERMITTED AND ARE SUBJECT TO REVISIONS MADE DURING THE PERMITTING PROCESS.

ISSUE DATE: 07/14/2022

DESIGNED BY: JW

DRAWN BY: FANW

CHECKED BY: TD

BID-CONTRACT:

This item has been digitally signed and sealed by Thomas F. Donahue, P.E. on the date below using a Digital Signature.

2022.07.13 19:24:47-04'00'

THOMAS F. DONAHUE, P.E.
FLORIDA REG. NO. 60529
(FOR THE FIRM)

STATE OF FLORIDA
PROFESSIONAL ENGINEER

Printed copies of this document are not considered signed and sealed and the signature must be verified on any electronic copies.

CLIENT

US GATEWAY INVESTMENTS LLC

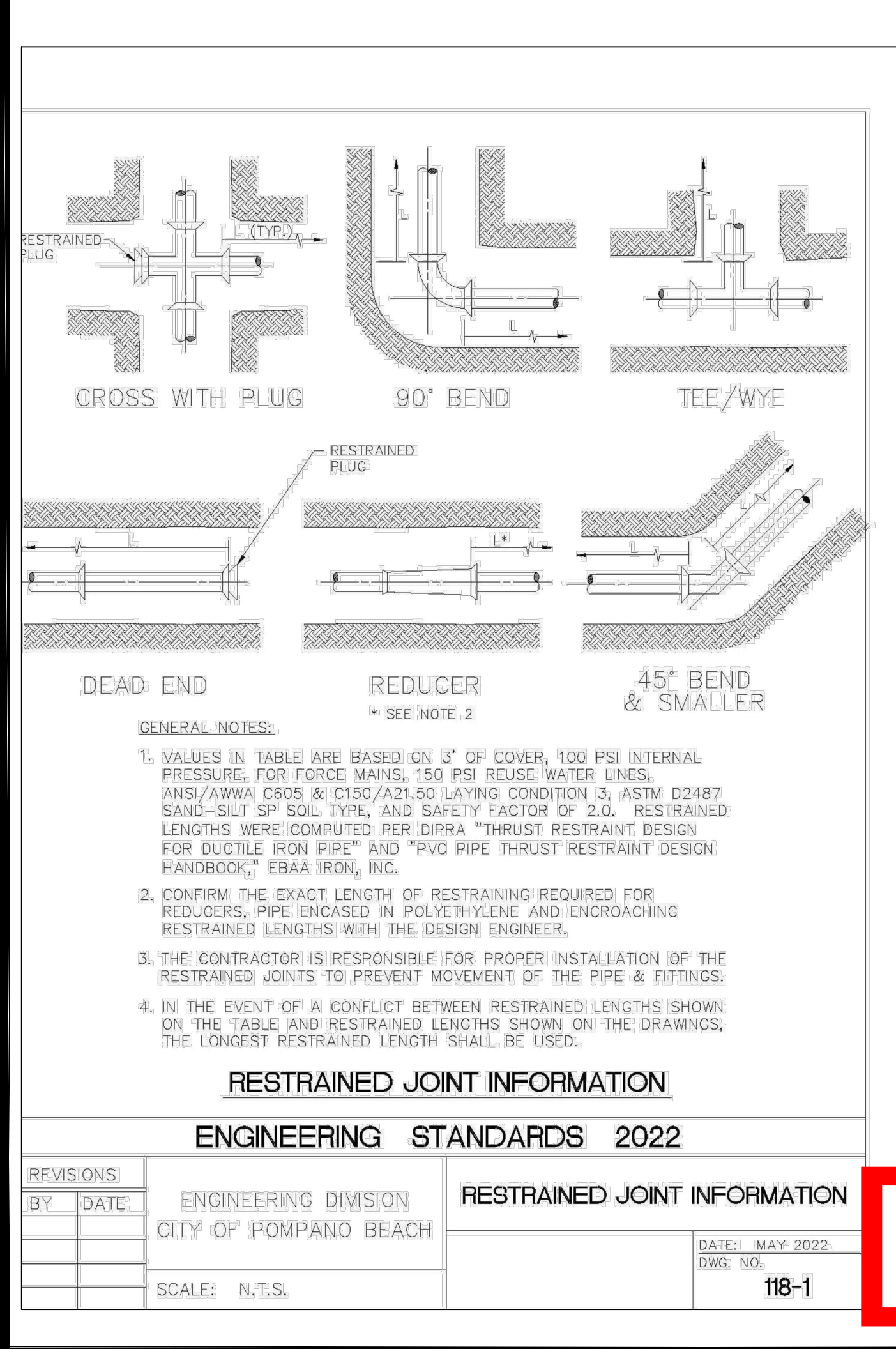
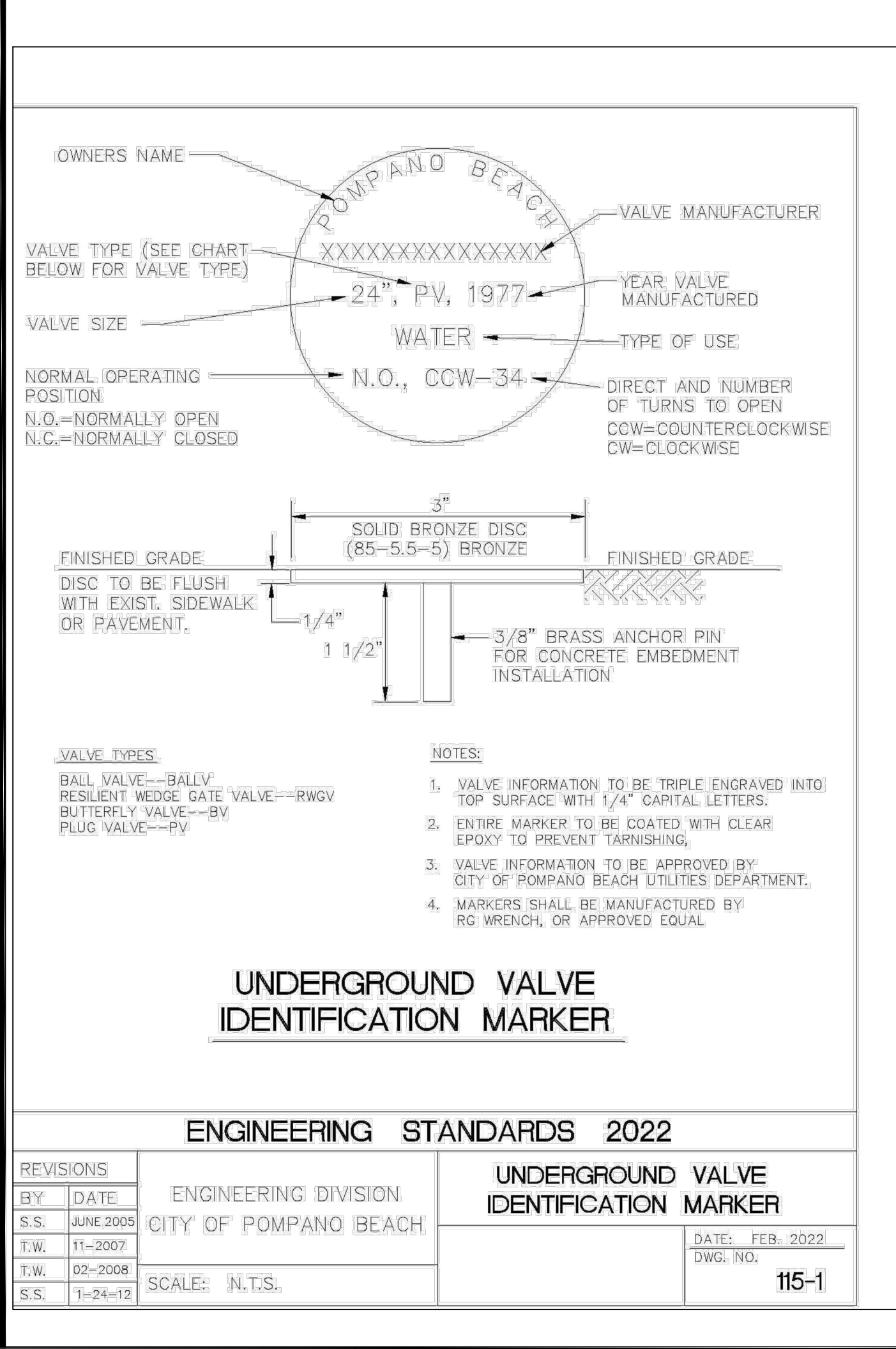
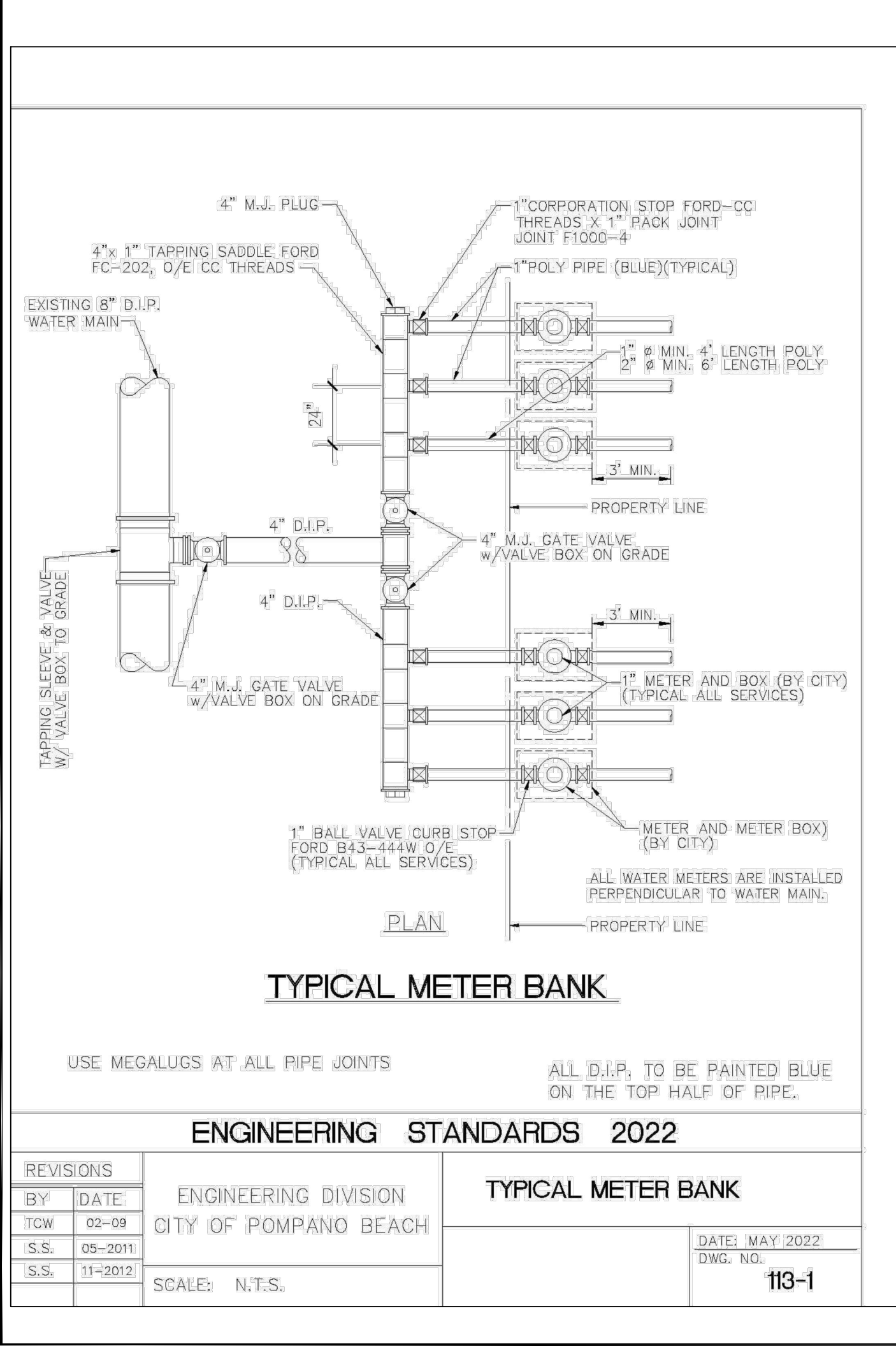
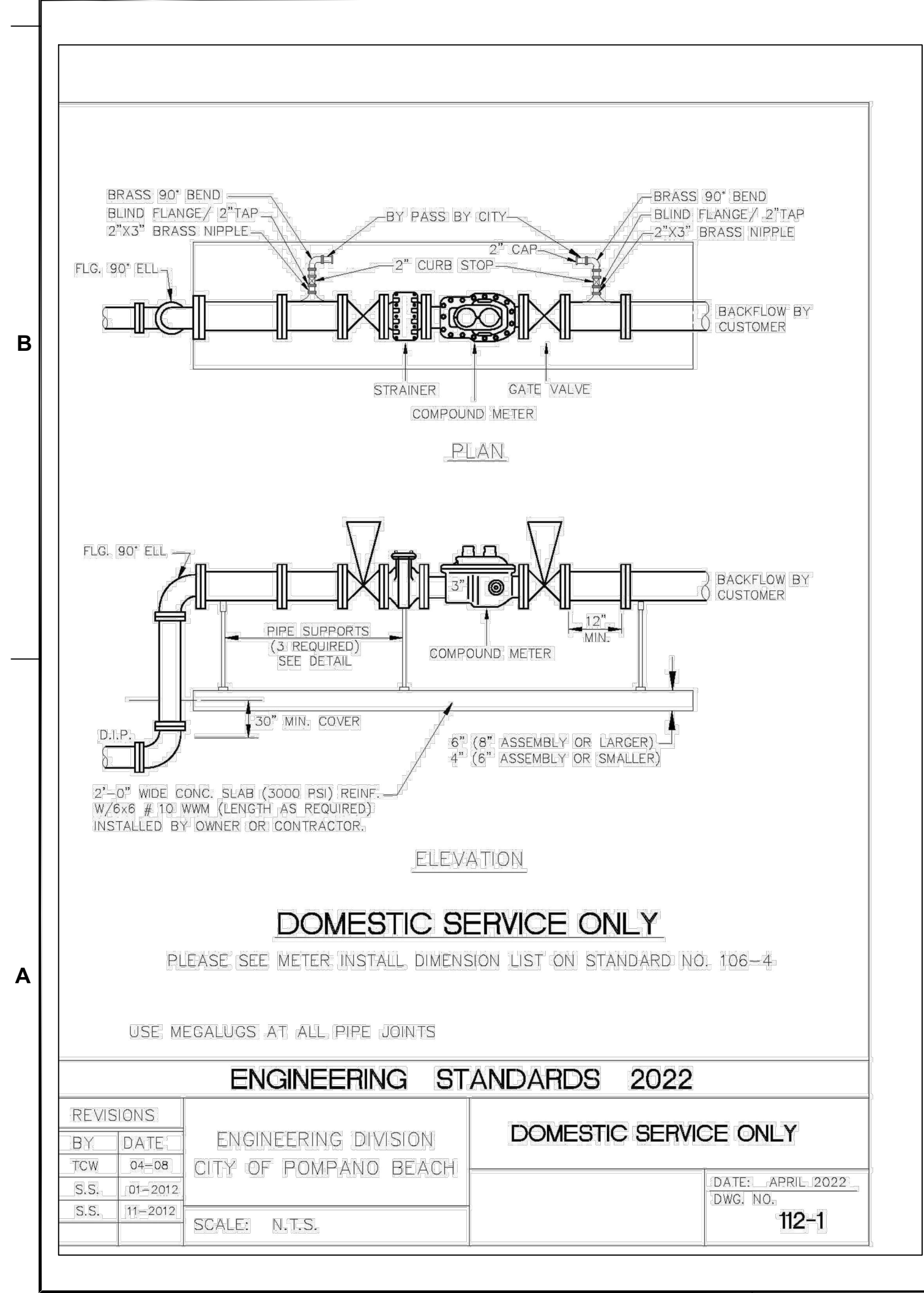
PROJECT

GATEWAY LUXURY APARTMENTS
950 N. Powerline Road
Pompano Beach, FL

SHEET TITLE

WATER AND SEWER DETAILS

STATUS: PRELIMINARY



DRC

PZ22-12000008

8/17/2022

STATUS: PRELIMINARY